

design intent

The design layout for the St Joachim's Catholic Primary School playground offers physical, social and sensory play experiences set in a nature based environment that includes sand, soft-fall bark, stone edging and seating, timber balance beams surrounded by a new lush robust and resilient sub-tropical inspired planting design.

PLAY ELEMENTS

- Dry creek bed for sand digging and "exploring";
- Timber bridge over the creek bed, several options are available from solid bridge construction to swing type bridge;
- The creek bed includes a hand pump water fountain for added water play fun;
- Performance space with an assortment of fixed outdoor musical instruments. Timber balancing posts are arranged to form a seating area to watch a 'musical performance' or to simply balance along;
- Active play space that includes play equipment that challenges the children's balance plus upper body strength such as balance beams and monkey bar type equipment. Due to the constricted width of the play-space the equipment suitable is lineal in their size and appearance;

CONNECTIVITY

- A new entry arbour over the existing gate entry and new concrete footpath, with the added excitement of a brightly coloured fence to the entire street frontage. Proposal is to install painted fence palings to the front of the existing fence, the number of palings required will allow each school student to paint at least one paling each. Palings could be in the shape and colour of coloured pencils; the options are limitless;
- Brightly painted "totem poles" scattered in groups at varying heights throughout the play area provide a visual connection of the overall play space plus a visual connection from afar from other areas of the school yard.

VEGGIE GARDEN

The veggie garden provides a fun relaxed learning environment that contains

- Raised garden beds for growing herbs, vegetables and flowers;
- Composting bins for re-cycling of lunchtime scraps and gardening waste;
- A small orchard for growing citrus trees;
- Chook pen for raising hens and collecting fresh eggs.



1. dry creek bed

proposed play ground plants



Lemon Scented Myrtle Tuckeroo Old Brush Box Weeping Lilli Pilli Linope Cordyline Bottlebrush Lomandra African Iris

stage 1 area

scale 1:100 @ A1; 1:200 @ A3

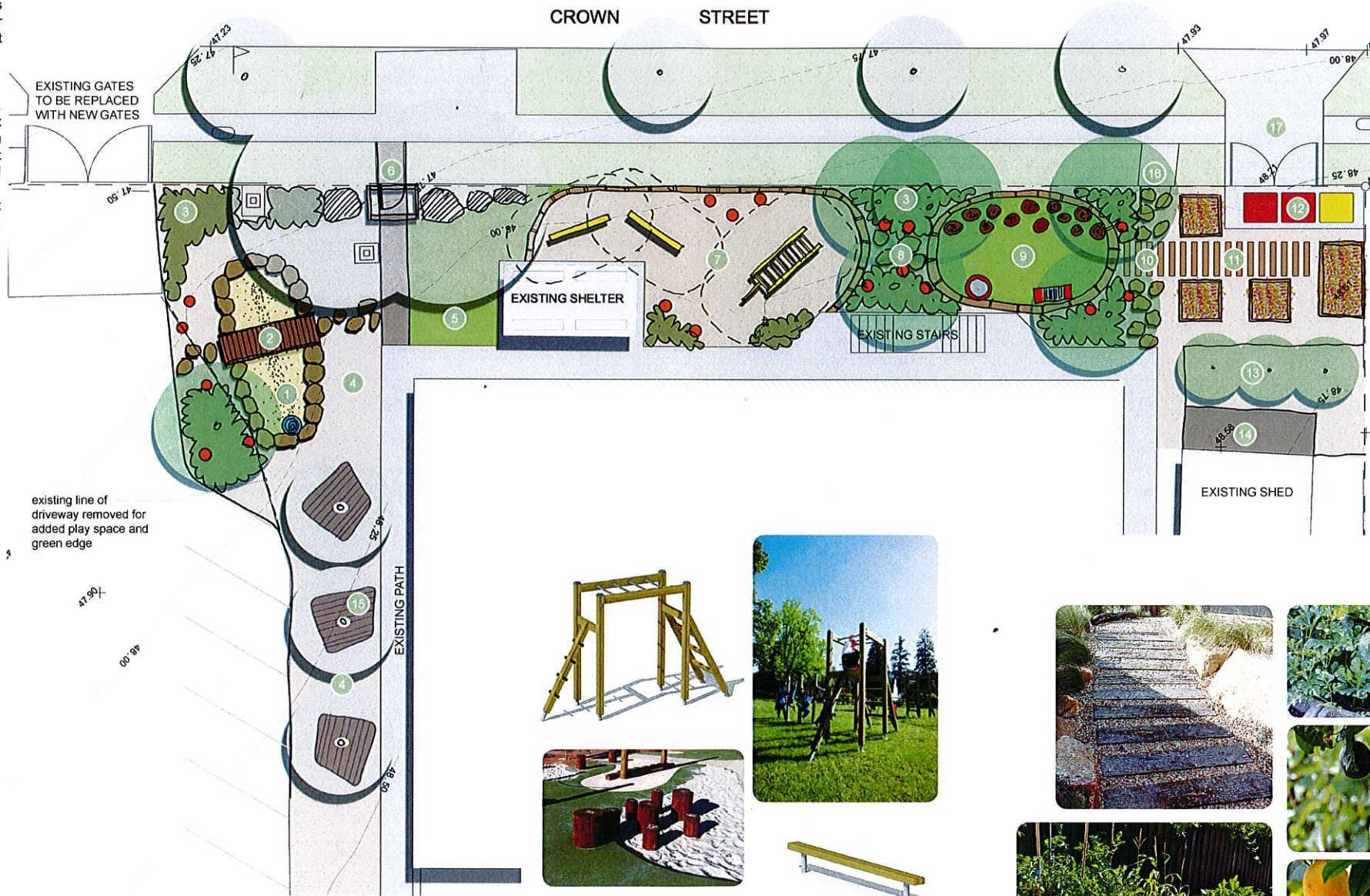
0 1 5 10 20m



6. new entry fence



9. sand play



7. active play space



11. veggie garden

legend

- dry creek bed (active play)
 - sand digging patch
 - hand water pump
 - colourful totem poles
- timber bridge over creek bed with stepping stones either ends for play & circulation
- new gardens with hardy native groundcovers & tussocky type grasses
- woodchip surface finish
- area to be kept open for increased surveillance & circulation
 - synthetic grass
- new arbour entrance over existing gate with new brightly coloured fence to full frontage
- active play space
 - balance beams
 - monkey bars
 - stone stepping border
 - softfall woodchip surface finish
 - colourful totem poles
- transitional zone (from active to passive play areas)
 - stone steppers through garden
 - new gardens with native groundcovers & tussocky type grasses
 - shade trees
 - colourful totem poles
- performance space
 - timber pole seats/steppers
 - musical instruments
 - synthetic turf
- transitional zone (from passive play to veggie garden)
 - timber sleepers in mulch surrounds
 - stone steppers from hall to existing gate
 - existing gate to remain in current location
- the veggie garden
 - raised garden beds with circulation space around each
 - timber sleepers in mulch surrounds
- new bin store area
 - concrete slab for bins
 - new gates to street frontage
- fenced orchard of small growing citrus trees & to allow chooks to roam away from chook pen
- secure chook pen enclosure
- new timber decking seats large enough for either quiet sitting or larger active groups
- existing gate entry to remain with the existing concrete path replaced with an informal stepping path
- new driveway & bin store gates

CLIENT: ST JOACHIM'S CATHOLIC PRIMARY SCHOOL
 SCALE: AS SHOWN @ A1
 DATE: 09th MARCH 2017
 DWG No: 01642 SD-01
 PROJECT No: 01642
 REVISION: B



p: 0423 594 412
 e: james@viewlandscapearchitecture.com.au
 w: www.viewlandscapearchitecture.com.au